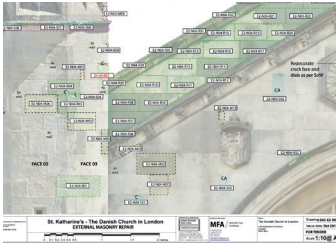


The Danish Church, London: External Repair Project (HLF Funded)



Client: The Danish Church in London
Contract Value: £330K
Completed: September 2018

St Katharine's church was built in 1826-8 as an Anglican chapel for the Royal Hospital of St. Katharine, a religious hospice. The church is a tall collegiate chapel type structure in the Perpendicular style designed by Ambrose Poynter who was a pupil of John Nash. It is on the north-eastern edge of Regents Park and it is listed Grade II*. In 1952 St. Katharine's became the Danish Church, a Lutheran church serving London's Danish community. The building was restored in 1952 and again in 1969 and it is leased by the Danish Church from the Crown Estate.

Today the church is used regularly and is well maintained. However, the fine ashlar masonry externally was in very poor condition due the corrosion of embedded iron cramps causing stone decay. The stone degradation had greatly compromised the appearance of the principal elevations, and as such St. Katharine's was placed on Historic England's Heritage at Risk Register.

MFA were appointed in 2015 to perform a detailed and costed condition survey report at St Katharine's to support an HLF stage 1 bid. Following HLF success, MFA was Lead Consultant for the documentation and oversight of urgent repair works to the fine ashlar masonry to the west facade and turrets, made possible by the Heritage Lottery Fund's Listed Places of Worship Scheme.

Highly creative and cost effective engineering solutions were utilised to carefully repair the stone turrets using a new internal stainless steel structure that enabled the failing embedded ironwork to be carefully removed without the need to re-build the turrets as originally proposed by the engineers. This preserved far more original fabric in accordance with best conservation practice and also provide a far more cost effective option. Value engineering and re-prioritisation of the repairs throughout the project ensured that it was delivered within the allocated budget. The clock was also restored and turret access to the roof greatly improved.

MFA provided the Management and Maintenance Plan for the Church moving forward and supported the church in all of their reporting and submissions to the HLF.